

# FLIES and FLY TACKLE by WEBER

*Originators of American Style Fly Fishing  
Equipment for American Conditions*

1941 CATALOG NUMBER 22



● Ted V. Helmer of Bonners Ferry, Idaho, had the thrill of his life when he battled this 13½ pounds of Rainbow "dynamite"! The trout was taken from Kootenai Lake in British Columbia, Canada, on Weber fly tackle.

## THE WEBER LIFELIKE FLY CO.

STEVENS POINT, WISCONSIN, U. S. A.

World's Largest in Fly Tackle • Also Operating FROST FISHING TACKLE CO. (Est. 1896)

CATALOG COPYRIGHTED 1941 BY THE WEBER LIFELIKE FLY CO.





**Weber**  
of Stevens Point



**NATURE FLIES AND LURES**  
For All Fresh Water Game Fish

**No. NR—"Nature's Rival" Series**

**E**ACH of the twelve lures in this series, as shown here and on pages 41 and 42, is the fly-tier's supreme accomplishment in the fashioning of a true counterpart of the natural insect. When the angler first examines one, he will marvel at the skill which has made it indeed Nature's Rival.

**HOOK:** Finest hollow point Pennell tapered eye, except Shinerakle which is dressed on ringed eye hook.  
**PACKING:** One on card, 6 in cellophane-top compartment box, or in assortments on attractive display panels as listed at bottom of this page and on page 42.

**No. NR1—Bumbilakle**

• Surprisingly lifelike in every detail of its skillful, ingenious fashioning—excels on the surface of stream or lake. Body is soft and downy; the sturdy wings are semi-transparent and delicately veined in pattern of natural insect. With its sprawling legs and feelers and its true-life markings, this Weber creation presents a counterpart of the bumblebee that you almost expect to buzz! Excellent for trout and pan fish; a tempting tid-bit for black bass.



Sizes 6, 8, 10—Each.....50¢ Dozen.....\$6.00



**No. NR2—Lokusakle**

• Masterly reproduction of the American Seven-year locust; high floating. Accurately shaped black body, shining eyes, translucent veined wings, vivid orange trims as of natural insect. One of the choicest offerings for trout, bass, pan fish.

Sizes 6, 8, 10—Each.....50¢ Dozen.....\$6.00

**No. NR3—Hopperakle**

• An effective floating grasshopper for trout, bass, pan fish. From its wings and legs to feelers and beady bright eyes it is remarkably natural. Hook-point is set well away from body, eliminating possibility of interference on the strike.

**PATTERNS:** Green (shown in color plate), and Brown; specify which.  
Sizes 4, 6, 8, 10—Each.....50¢ Dozen.....\$6.00



**No. NR4—Shinerakle—Fly Rod Minnow**

• In the unique design of this sleek fly rod minnow lies its deadly luring effectiveness for trout and all pan fish. The larger sizes are always dependable takers of bass, wall-eyes, pickerel and northern pike. Fish it with or without spinner.

Besides the original pattern (No. SH1) shown in color plate, the Shinerakle is now available in five additional patterns as listed below. Each has brilliant red head with white eyes; feathery tail and dorsal fin. Bodies imitate the flashing sides of live shiner.

**SIZES:** 4, 6, 8, 10, 12, 14. **HOOK:** Highest grade hollow point forged long shank ringed eye.  
No. NR4 (as illustrated, without spinner)—Each..... 50¢ Dozen.....\$6.00  
No. NR4N with Handkraft HiLite Nickel Spinner integrally connected—Each.... 65¢ Dozen.....\$7.80  
No. NR4G with Handkraft Gold-Plated Spinner integrally connected—Each..... 75¢ Dozen.....\$9.00

**SIX PATTERNS** as listed and described below:

No.	Body	Back	DORSAL FIN	TAIL
SH1.....	Cream.....	Peacock, edged in Red.....	Red & White.....	Gray
SH2.....	Silver.....	Black, edged in Red.....	Gray.....	White
SH3.....	Silver.....	Green, edged in Black.....	Gray.....	White
SH4.....	Silver.....	Peacock, edged in Purple.....	Gray.....	White
SH5.....	Silver.....	Gray, edged in Black.....	Gray.....	White
SH6.....	Yellow.....	Peacock, edged in Red.....	Red & White.....	White

• **No. SHA6—SHINERAKLE ASSORTMENT**—Contains 6 lures, one of each of the six patterns listed (without spinners), mounted on display panel as shown. Per Assortment.....\$3.00



6"x6" easel-back Display Panel; printed in two colors on silver.





**Weber**  
of Stevens Point



**NATURE FLIES AND LURES**  
For All Fresh Water Game Fish

**No. NR5—Krikakle**



• So natural is this ingenious imitation of the living cricket that its success on stream and lake has been little short of phenomenal. Floating lightly downstream with the current, it prompts the vicious attack of brown, brook or rainbow. Bass and pan fish, as well, find the Krikakle a choice and compelling tempter.

Skillfully and durably dressed by the most expert tiers.

Sizes 6, 8, 10—Each.....50¢ Dozen.....\$6.00

**No. NR6—Gadake—Natural Horse Fly**

• Distressing tormentor of live-stock, but relished and ever-welcome to the palate of trout, bass and all pan fish. Cunningly devised to duplicate exactly the common horse-fly. Velvety body; wings are silky smooth feathers of proper tone and size. Floats lightly on the surface, or may be used wet.

Sizes 6, 8, 10—Each.....50¢ Dozen.....\$6.00



**No. NR7—Beetilakle**



• Holds in full measure the strong appeal of the luscious real-life beetle. Gleaming black shell-like body, edged in red. The hook-point is set low, insuring positive hooking. Floats when dry, but a short pull-up of the rod sinks it slowly. Trout, bass and pan fish hit it hard.

Sizes 4, 6, 8, 10—Each.....50¢ Dozen.....\$6.00

**No. NR8—Pillarake**

• Soft and fluffy—skillfully formed in close resemblance to the juicy, squirming caterpillar. Consistently tempting to all trout, bass and pan fish. Downy hackle is tied in full circumference on a special hook with shank bent to natural wriggly position of crawling insect.

Sizes 4, 6, 8, 10—Each.....50¢ Dozen.....\$6.00



**No. NR9—Dobsonakle**



• The dobson, wing-stage of the hellgrammite—always a tasty prize for trout and black bass. You may be sure that sizable rock bass, crappies and bluegills, as well, take the insect with characteristic eagerness. The Dobsonakle is a surprising imitation of its living counterpart. Silky smooth wings sweep gracefully along body; legs sprawl naturally; bright eyes. High floater.

Sizes 4, 6, 8, 10—Each.....50¢ Dozen.....\$6.00

**No. NR10—Stoneakle**

• Because of its natural habits, the stone fly is a rich source of food supply for trout in most waters, especially during July and August. In addition, the insect has always been an appetizing offering for sportive pan fish and the battling small mouth. The Stoneakle, realistically counterfeiting the live fly, is expertly made. Vein arrangement is accurately marked on semi-transparent wings, which lie flat as at rest.

Sizes 4, 6, 8, 10—Each.....50¢ Dozen.....\$6.00



**No. NR11—Helgramakle**



• A true imitation of the natural insect relished so much by trout and bass as well as all pan fish. Particularly effective when fished close to the bottom with BB shot sinker about 12 inches ahead of lure. Body is segmented in precise duplication of the living hellgrammite. Carefully dressed by expert tiers.

Sizes 4, 6, 8, 10—Each.....50¢ Dozen.....\$6.00

No. NR "Nature's Rival" Series continued on next page.





**Weber**  
of Stevens Point

**NATURE FLIES AND LURES**  
For All Fresh Water Game Fish



**No. NR12—Juneakle**

• The twelfth and final member of this outstanding series of true-to-life nature lures. Here is a Junebug imitation that speaks for itself. Surely its promise of crunchy lusciousness must gain immediate response from trout and pan fish—yes, and black bass! The glistening brown body is set well away from the hook point for certain hooking.

Sizes 4, 6, 8, 10—Each.....50¢ Dozen.....\$6.00

**No. NRA6—Nature's Rival Assortment**

• Contains 6 No. NR Nature's Rivals, neatly mounted on display panel as shown. SIZES: 6, 8 or 10.

SIX ASSORTED POPULAR PATTERNS as listed below:

Bumbilakle	Krikakle	Stoneakle
Hopperakle	Pillarakle	Helgramakle

Per Assortment (retail 50¢ per lure).....\$3.00

Mounted on 6"x6" easel-back Display Panel; printed in two colors on silver stock.



**No. NRA12—Nature's Rival Assortment**

• Contains the complete series of 12 No. NR Nature's Rivals, mounted on display panel as shown. SIZES: 6, 8 or 10.

TWELVE ASSORTED PATTERNS as listed below:

Bumbilakle	Shinerakle (SH1)	Beetilakle	Stoneakle
Lokusakle	Krikakle	Pillarakle	Helgramakle
Hopperakle	Gadakle	Dobsonakle	Juneakle

Per Assortment (retail 50¢ per lure).....\$6.00

Mounted on 6"x6" easel-back Display Panel; printed in two colors on silver stock.

**No. DN—Weber Dragonakle**

• This gay deceiver is an intriguing likeness of the natural dragon fly. Lay it gently on the surface and impart with rod-tip the slight tremor of the expected attempt to take the air again. Strike!—there's your trout, or bass, or the kind of gamey pan fish that's a sure keeper. Wings of finest feather, tied to a nicety; tenuous body is flexible, lifelike.

HOOK: Highest quality hollow point long shank turned-down tapered eye. PACKING: One on card, 3 cards connected in cellophane-top box. Sizes 4, 6, 8, 10—Each.....50¢ Dozen.....\$6.00

SIX PATTERNS as listed and described below:

No. DN1—Black wings, Brown body.	No. DN3—All Black.	No. DN5—All Yellow.
No. DN2—All Blue.	No. DN4—White wings, Black body.	No. DN6—All Brown.



**No. HG—Weber Helgramite**

• Faithful reproduction of the natural hellgrammite. Soft body is segmented as in living insect. Accurately dressed throughout. Most effective when fished close to the bottom; place BB split shot sinker about 12 inches ahead of lure for this purpose. Reliable tempter for all trout and pan fish.

HOOK: Finest hollow point long shank turned-down tapered eye. TWO PATTERNS: Dark Green, Dark Brown; please specify. PACKING: One on card, 6 cards connected, one dozen in box. Sizes 4, 6, 8, 10—Each.....35¢ Dozen.....\$4.20

• No. HG6—HELGRAMITE ASSORTMENT—Contains 6 lures, three of each of the two patterns listed, mounted on display panel (similar to panel shown with No. NRA6 at top of page). Per Asst....\$2.10







**Weber**  
of Stevens Point



**NATURE FLIES AND LURES**  
For All Fresh Water Game Fish

**No. FA—Weber Frogakle**

(U. S. Patent No. 87374)

• Virtually a wizard in the luring of all fresh water game fish—from black bass, pike and muskie to trout and large pan fish!

Springy, weaving legs of untrimmed hair keep it riding lustily on the surface—frisk, delicious, tempting! Soft body of close-cropped hair yields instantly to closing jaws. Bright black-and-yellow eye-beads securely sewed in head. Furnished in two natural frog patterns.



No. FA FROGAKLE

HOOK: Best quality hollow point forged ringed eye.

TWO PATTERNS: Green Leopard (shown in color plate), and Brown Pickerel; please specify. PACKING: One in lusteroid tube; half dozen or more tubes packed in attractive display container.

Sizes 4, 6, 8—Each . . . .75¢    Dozen . . . . \$9.00    Sizes 1/0 and 2—Each . . . . \$1.00    Dozen . . . . \$12.00

**No. CA—Weber Crabakle**

(U. S. Patent No. 87373)



No. CA CRABAKLE

• Startling in its lifelike imitation of the toothsome crawfish. Rainbows, browns, large and small mouth bass, pike, pickerel and muskie—a long list, but every one of these champions of brook and lake has been deceived and caught by the Crabakle. In the smaller sizes, the lure is highly productive of all species of pan fish.

Short clipped hair forms the non-resisting body; pincers are bristly, untrimmed. Shining eyes, protruding feelers, natural crawfish color.

HOOK: Highest grade hollow point forged long shank ringed eye. PACKING: One in lusteroid tube; half dozen or more tubes packed in attractive display container.

Sizes 4, 6, 8—Each . . . .75¢    Dozen . . . . \$9.00    Sizes 1/0 and 2—Each . . . . \$1.00    Dozen . . . . \$12.00

**No. FRM—Fly Rod Mouse—Weedless**

• A lifelike, weedless mouse lure skillfully sculptured in hair and feather. Body and ears all hair; tail, one feather. Eyes are shining beads sewed in. Hook is fully hidden in yielding body, yet it pierces with hair-trigger certainty on the strike. A perfect imitation that takes large trout and bass readily.



FLY ROD MOUSE

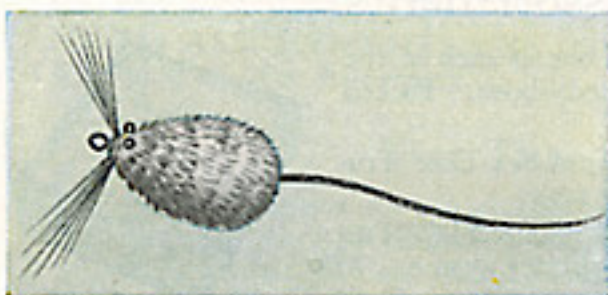
HOOK: Highest grade hollow point forged ringed eye. PACKING: One on card in box, one dozen boxes in display carton.

Size 4—Each . . . .65¢    Dozen . . . . \$7.80    Sizes 1/0 and 2—Each . . . .75¢    Dozen . . . . \$9.00

• No. FRMD — DOUBLE HOOK MOUSE — Exactly the same as No. FRM above, but dressed on double hook. Intended for those who feel that two hooks are more effective. Packed same as No. FRM.

Size 4—Each . . . .65¢    Dozen . . . . \$7.80    Sizes 1/0 and 2—Each . . . .75¢    Dozen . . . . \$9.00

**No. MO—Weedless Mousie**



• A very light weedless mouse for bass, all trout and, in the smaller sizes, pan fish. Hair yields instantly on the strike. Casts and lifts with exceptional ease. Body and bristly whiskers all hair, expertly trimmed; feather tail. Beady black eyes securely sewed in head.

HOOK: High quality ringed eye. THREE PATTERNS: Gray, Brown, White; please specify. PACKING: One on card, 3 cards connected in box.

Sizes 4, 6, 8—Each . . . . .25¢    Dozen . . . . . \$3.00

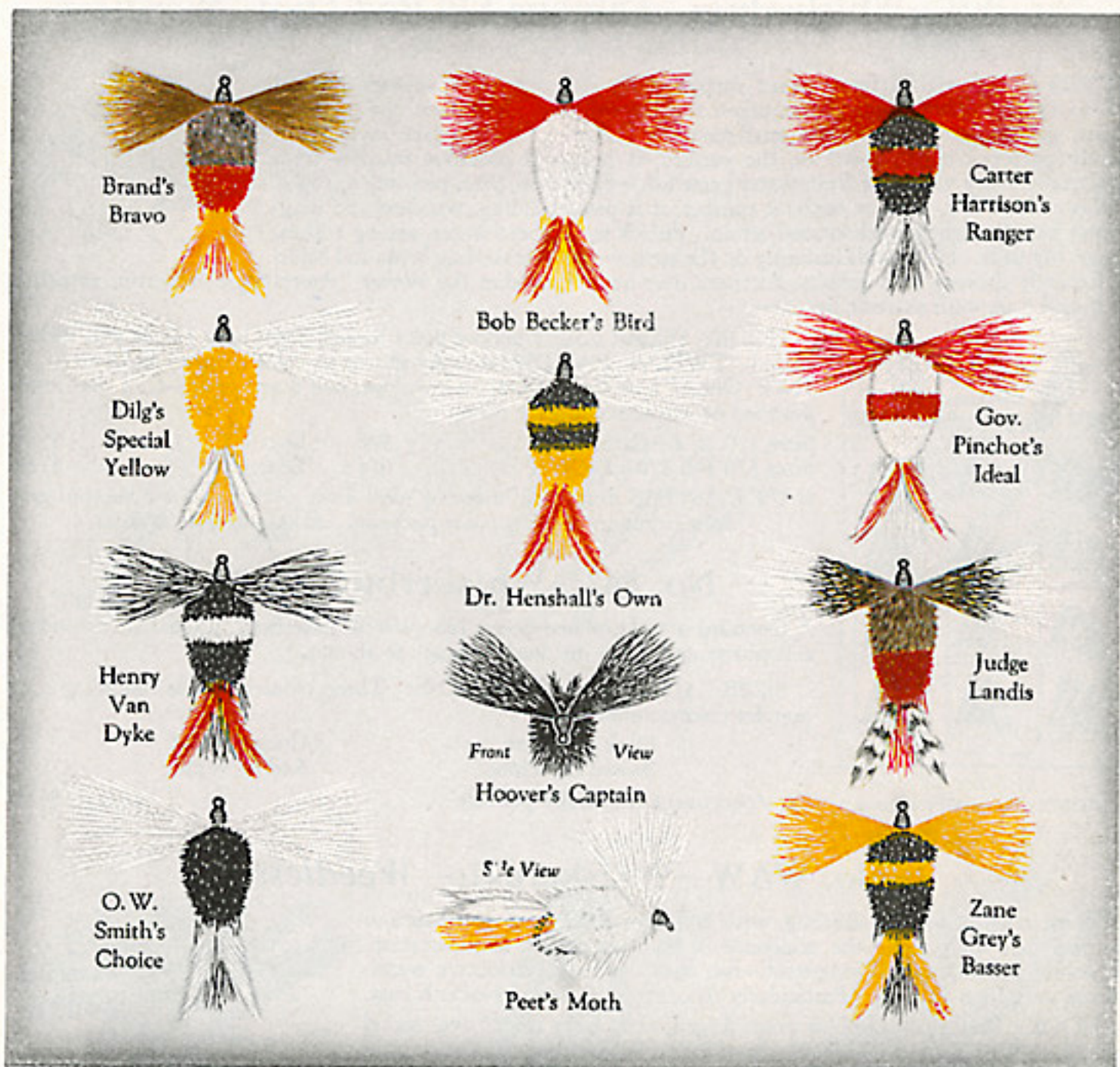




**Weber**  
of Stevens Point



**"AMERI-STYLE" FLIES AND LURES**  
For All Fresh Water Game Fish



**No. HL—Henshall Lure—Weedless Fly Rod Floater**

DR. HENSHALL'S original lure designs, representing the sum of a lifetime's study and experiments, have been worked into practical form by Weber who alone has the personal endorsement and authorized use of the Henshall name.

No. HL is the highest exemplification of Dr. Henshall's principles in every detail of design, materials and craftsmanship—it has everything that must be present in the perfect fly rod lure!

Weedless and snag-proof. Skillfully dressed throughout with finest deer hair. (Sizes 4, 6, 8 and 10 are dressed with selected hackle instead of hair.)

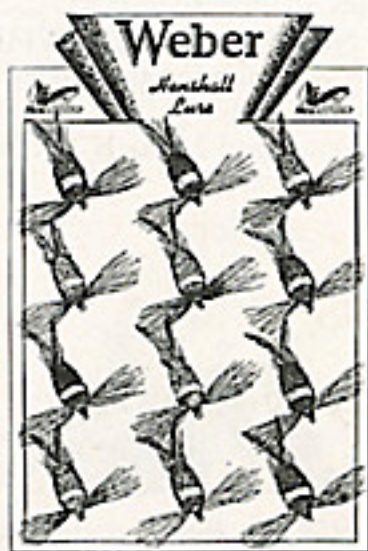
Bass sizes worked "still-and-twitch." Trout sizes fished as usual.

HOOK: Best quality hollow point turned-down tapered eye. TWELVE PATTERNS: As shown in color plate above. PACKING: One on card in box, one dozen boxes in carton.

Sizes 6, 8, 10—Each . . . . .	50¢	Dozen . . . . .	\$6.00
Sizes 2 and 4—Each . . . . .	60¢	Dozen . . . . .	\$7.20
Sizes 3/0 and 1/0—Each . . . . .	75¢	Dozen . . . . .	\$9.00

• No. HL12—HENSHALL LURE ASSORTMENT—One dozen assorted patterns on display panel as shown.

Per Asst. . . . . Size 6, 8 or 10 \$6.00; size 2 or 4 \$7.20; size 3/0 or 1/0 \$9.00



7"x10" 3-color easel-back Panel.

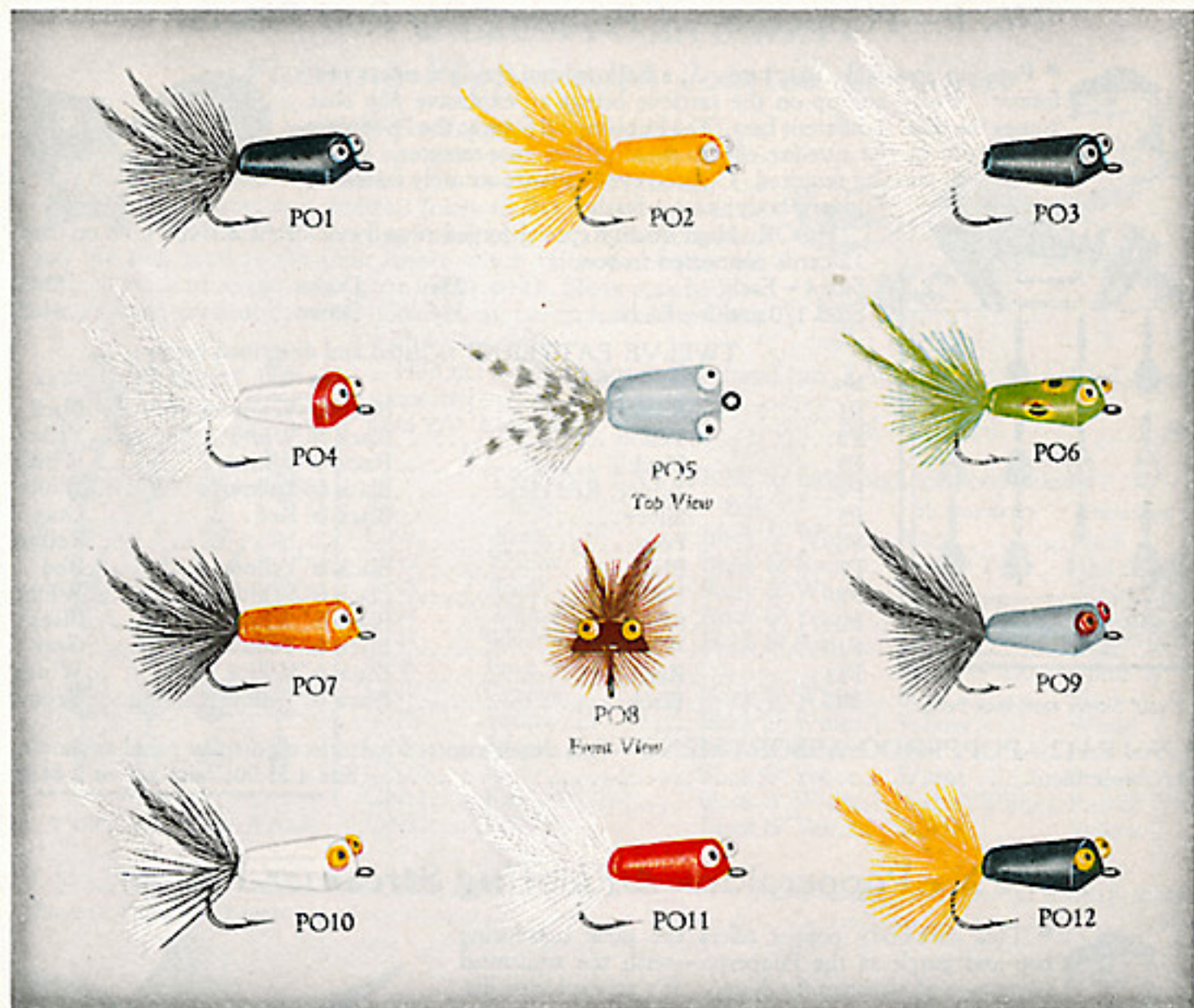
"Buy American or American Labor Cannot Buy"





**Weber**  
of Stevens Point

**FLOATING CORK LURES**  
For All Fresh Water Game Fish



**No. PO—Popeye—A Fly Rod Floater**

*Favorite of Fly Anglers Everywhere!*

EVERY year this floating cork-body lure is making new friends with thousands of fly fishermen. Reports of its constant success are being received from all localities. Large and small mouth black bass; brook, brown and rainbow trout; bluegills and crappies—these and other fresh water game fish have been consistently lured and taken by this killer.

The Popeye has been skillfully designed to hook and hold. Picks up and casts with extreme ease; requires no dressing to float it high and dry. Light cork body with smooth, glossy finish. Dressed with feathers and natural hackle for the tail. . . . With its bulging, staring goggle-eyes and bushy feather tail, this squat lure has a "buggy" character all its own.

HOOK: Fine quality special forged ringed eye.  
TWELVE PATTERNS: As shown in color plate above. PACKING: One dozen on card in box.  
Sizes 4, 6, 8, 10—

Each . . . . . 25¢      Dozen . . . . . \$3.00  
Sizes 1/0 and 2—  
Each . . . . . 35¢      Dozen . . . . . \$4.20



7"x10" 3-color easel-back Panel.



SMALL-MOUTH BLACK BASS

• No. POA12—POPEYE ASSORTMENT—One dozen assorted patterns on display panel as shown. Per Asst. . . . . Size 4, 6, 8 or 10 \$3.00; size 1/0 or 2 \$4.20

"Buy American or American Labor Cannot Buy"